

# CERTIFICATE OF LOCATION OF GOVERNMENT CORNER

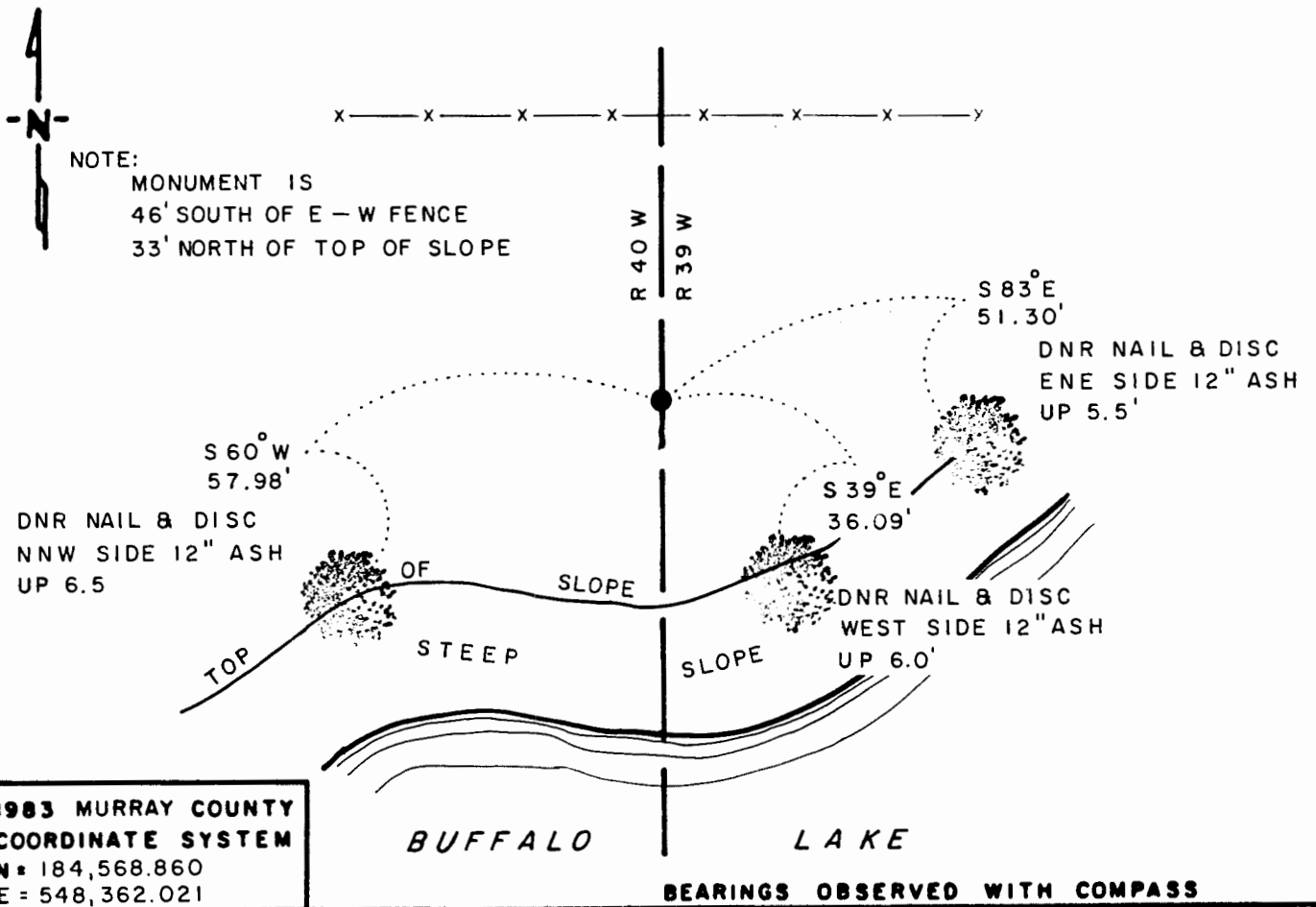
NORTHEAST Corner of Section 13, Township 107 N, Range 40 W, 5<sup>th</sup> P.M.

STATE OF MINNESOTA, County of MURRAY

At the corner location shown on the sketch

- On \_\_\_\_\_ found a \_\_\_\_\_  
DATE
- left monument as found,  lowered monument,  removed monument (explain)
- On 7-23-91 placed a 3/4" x 24" REBAR WITH ALUMINUM CAP STAMPED  
DATE "DNR SURVEY MARKER", FLUSH

## SKETCH OF REFERENCE TIES



1983 MURRAY COUNTY  
COORDINATE SYSTEM  
N = 184,568.860  
E = 548,362.021

BEARINGS OBSERVED WITH COMPASS

Statement of evidence relative to this corner location is on back of page

J.B.M. 7-31-91  
WAS 01346

I hereby certify that this document and the data contained herein was prepared by me or under my direct supervision.

Bruce W. Shepperd 8-12-91  
SIGNATURE DATE

Registration No. 17603

- Land Surveyor,  Professional Engineer
- County Surveyor,  County Engineer

OFFICE OF THE COUNTY RECORDER  
County of MURRAY

I hereby certify that this document was filed in the Co. Recorders office at \_\_\_\_\_ M. on the \_\_\_\_\_ day of AUG 15 1991 A.D., 19\_\_

County Recorder James V. Johnson

By \_\_\_\_\_, Deputy

DOCUMENT NO. \_\_\_\_\_

Northeast Corner of Section 13, Township 107 North, Range 40 West

The DNR Bureau of Engineering contacted the following for survey information:

Secretary of State's Office  
Murray County Recorder's Office and Highway Engineer's Office  
Chicago and North Western Railway Office in St. Paul

- 1861 U.S. General Land Office notes obtained from the Secretary of State's Office show the corner marked with a wood post in a mound of stones with the following bearing trees marked:  
15" White Oak, South 80° East, 130 links (85.80 feet)  
10" Cottonwood, South 43° West, 150 links (99.00 feet)
- 1907 Surveyor's Record Book A, page 205, obtained from the County Recorder's Office contains a survey by J. W. Woolstencraft. Survey states that there is no monument at corner.
- 1985 July, The DNR Bureau of Engineering searched in area of corner for occupation lines, mound of stones, and GLO bearing trees but were unable to find any evidence of corner. Computed a lost position for corner and found it to be:  
2642.24 feet from the east quarter corner of Section 13  
5284.49 feet from the northeast corner of Section 12  
Used the computed lost position for a temporary location of corner for a survey in the west half of the northeast quarter of Section 13.
- 1991 May, The DNR Bureau of Engineering found an east-west fence in area of corner. Searched for but found no evidence of the GLO bearing trees. Talked with area landowner Mr. Rehborg for testimony regarding the fence. Mr. Rehborg said that he bought his property in 1973 and has always maintained the fence in its current location. Computed the lost position for corner and found it to be:  
46 feet south of the east-west fence  
2638.87 feet from the east quarter corner of Section 12  
2638.87 feet from the east quarter corner of Section 13

Analysis of the above information led the DNR Bureau of Engineering to conclude that the computed lost position marks the location of the corner.